

Hello planner, hello architect, hello planning team

Thank you for your support in developing our new BIM plugin. With your help we were able to develop our BETA version into a plugin that is tailored to your requirements.

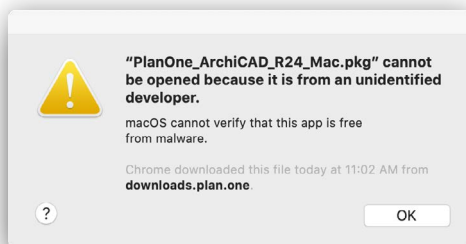
The new BIM plugin is available free of charge for Archicad versions 23 & 24, both for Windows and Mac.

1. Installation

In the following we will guide you through the installation process. After you have downloaded our plugin, you will directly receive this message which you should resolve as follows:

Step 1

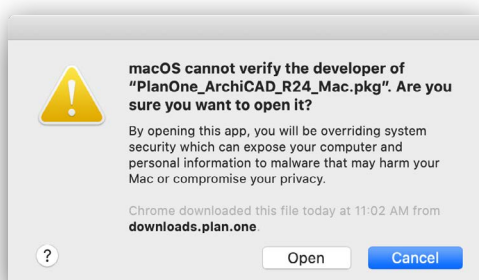
Opening the installation file via the finder:



1. Open the Finder and go to the folder where the file is located. By default this is the download folder.
2. While holding down the „control“ key, click on the icon of the app and select „Open“ from the context menu. Alternatively, you can also right-click on the file and select „Open with“.

Step 2

Now you will be given the opportunity to run the app. Please confirm with „Open“.

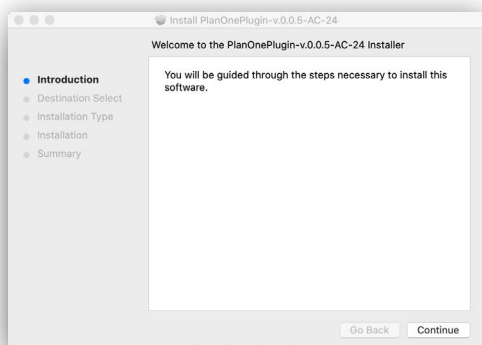


For your information:

With the introduction of Developer ID registration, software publishers are asked to license their products in the App Store. Otherwise, this notice will be displayed. Together with our partner, Werkbank IT GmbH, a leading agency for the development of BIM software solutions, we have developed a plugin that meets the highest security criteria. The licensing process of software products can take up to several months. However, we do not want to keep you waiting for our new plugin that long. We are confident that you will not see this message in future updates.

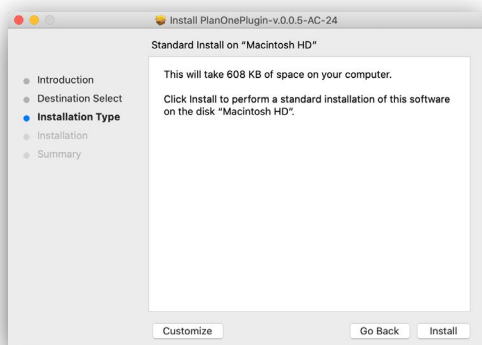
Step 3

Now click on „Continue“ to start the installation with the setup assistant. (The installation process is introduced to you by the version Archicad 24 which is also valid for version 23.)



Step 4

Now select Install. The storage location is displayed in the text field.

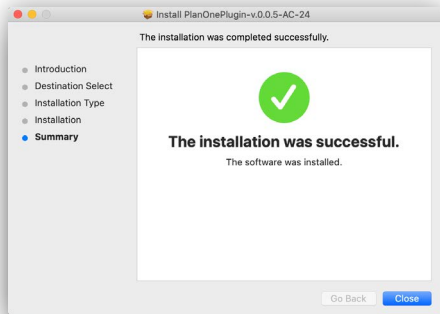


Step 5

Confirm the security advice by entering your system password, which you use to log in on your Apple device.

Step 6

Done. Please click on „Close“ and start your planning software.



2. The application

In this version you have several options for integrating product information into your projects. We take care to follow your usual workflows and the terms that Archicad provides.

To integrate a product, please proceed as follows:

Step 1

You can now find the application in the menu under „Plan.One“ -> Plugin. After clicking on “Plan.One Pallet” a browser window opens. When opening it for the first time, a small browser window appears in the middle of the screen. If desired, you can also enlarge it.

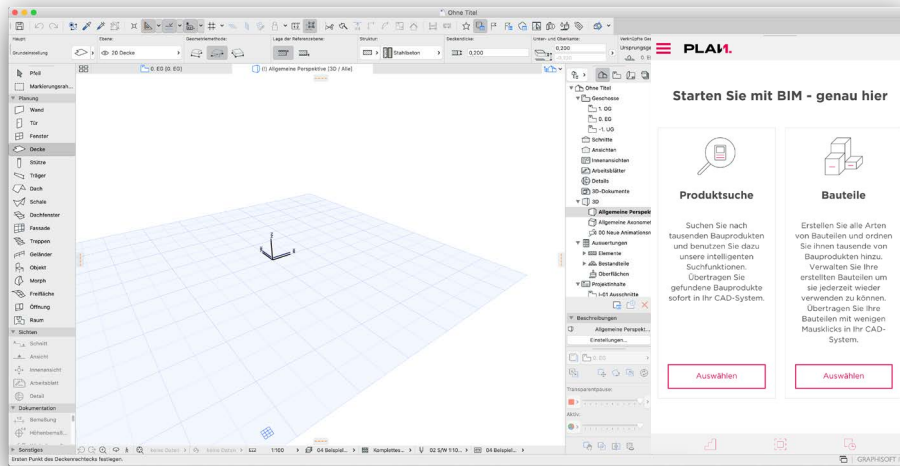
Recommendation: You have the possibility to „anchor“ the browser window in Archicad. To do this, simply drag the browser window that appears to the right. A part of the screen will then be marked grey and when you release the mouse, the browser window will be „anchored“ at this point.

Now log in with your user account. If you don't have an account yet, you can register now for free. In addition to the use of the plugin, registration gives you immediate access to further planning data such as BIM models, CAD files, tendertexts, etc. and you can easily document the use of individual products in your planning with the help of our watch list.

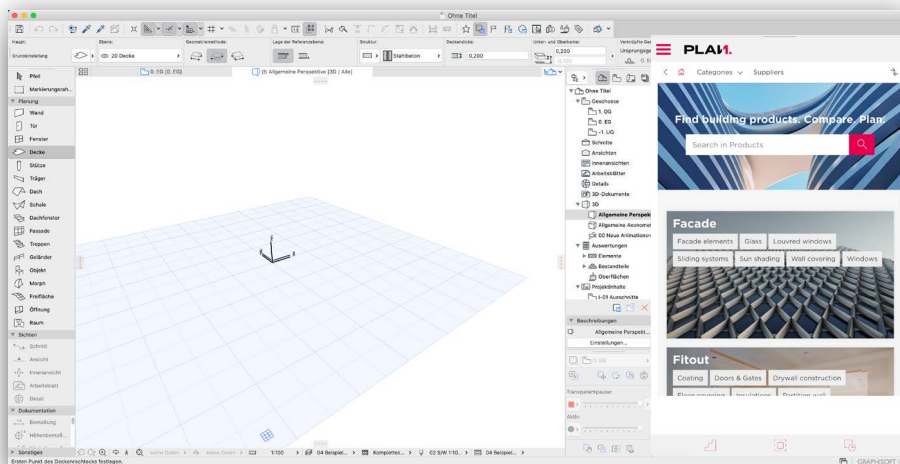
Note: We also advise you to register in the plugin before you have loaded your project. Since in some cases entering the login data can also trigger corresponding short commands in Archicad. We try to fix the problem as soon as possible.

Step 2

To find a suitable product, select the product search now.

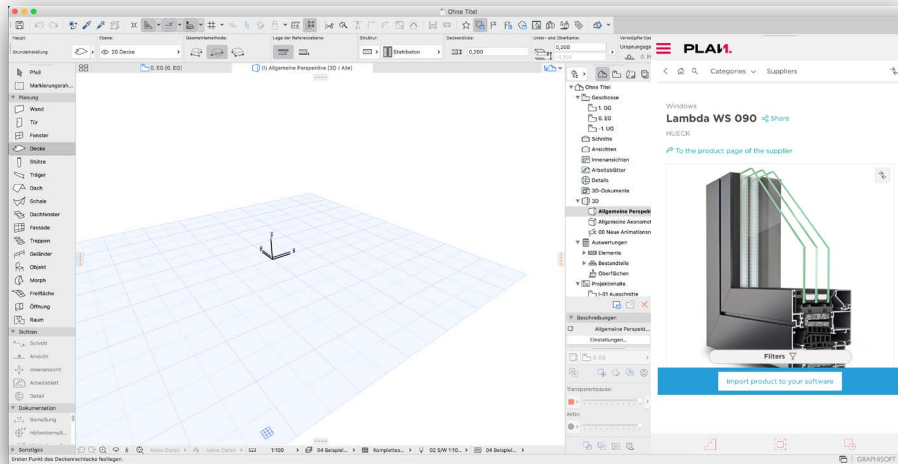


You can find suitable products quickly and easily using the search bar and our categories.



Step 3

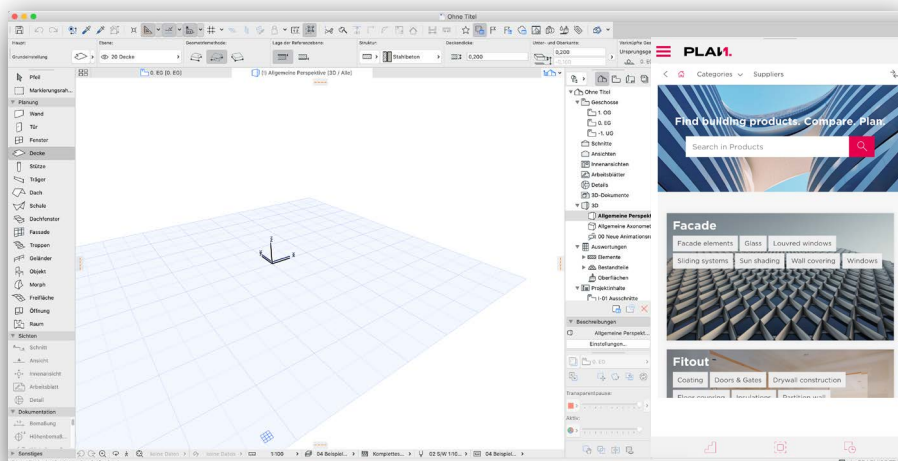
If you have found a product you want to integrate, click on „Import product“.



Step 4 (Transfer into your project)

You currently have four options for transferring data to your project:

- As material: You will find the transferred product with all its properties in your material library.
- Create components as layer system, so that e.g. a facade construction with several layers with different thicknesses can be supplemented and extended as desired.
- If a library part is stored on Plan.One by the manufacturer, you can select it and transfer it directly to the project.
- You can create a new library part. You are free to choose the type (column, window, etc.). The selected type defines how the object behaves in Archicad. Then you adjust the geometry according to your needs, the type parameters are those of the selected product.



Do you have any questions or comments?

With our [tutorials](#) you can easily learn how to use our plugin.

For further questions or feedback please contact us. We are always working on optimizing our service for you to simplify your daily planning routine.



Contact us now.

Bernd Benkel

Account Manager Architect

support@plan.one

Legal notice

Please note that we reserve the right to analyze user interactions to optimize our solution. Registration is required to use the Plan.One plugin.

As a registered user you agree to our terms of use and privacy policy guidelines in current version agree

You can find them here:

[Terms of Use](#)

[Privacy Policy](#)